

Windchill® Archive

Archive and restore your Pro/INTRALINK® and Windchill data

Windchill Archive is the perfect add-on module for Pro/INTRALINK and Windchill users who want to quickly extract and restore product information.

The optional Windchill Archive module provides long-term storage and retrieval capabilities for Pro/INTRALINK and Windchill. Administrators can archive and/or purge unnecessary, unwanted and obsolete data interactively with easy-to-use wizards, or automatically at regularly scheduled intervals. Plus, administrators can use the search tools to locate archived information and restore the data when needed.

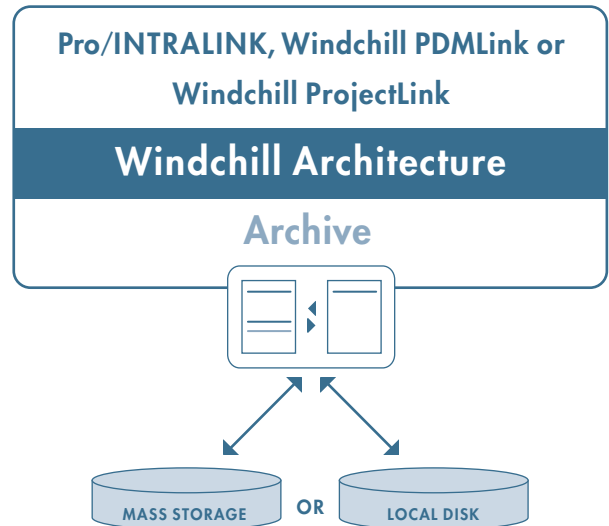
Key Benefits

- Improve system performance by reducing the “clutter” of unnecessary data
- Drive compliance with industry regulations and corporate policies pertaining to data retention
- Optimize administrator productivity by utilizing wizards and a single, user-friendly interface to simplify the creation of purge and archive jobs

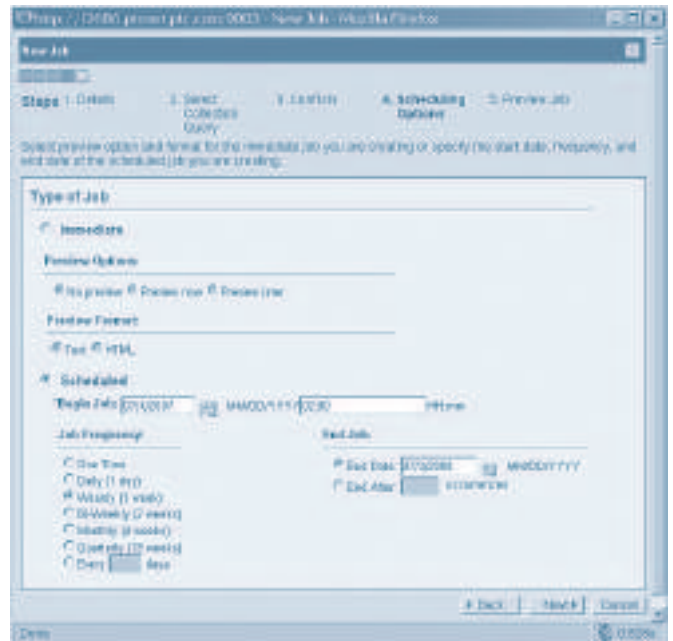
Features

Purge, Archive and Restore Management

- Utilize a central dashboard for purge and archive tasks, as well as application management
- Create purge jobs to permanently remove data, and create an archive of data that may be restored at a later time
- List purge and archive jobs, along with their status
- Provide access to managing queries for archive and purge
- Apply powerful usability tools:
 - Table Preferences Wizard for sorting and field display options
 - View chooser for filtering (e.g., Archive jobs only, Restore jobs only, etc.)



Windchill Archive works with all Windchill-based solutions, including Pro/INTRALINK 8.0 and later versions, providing a means to extract and restore product information.



Windchill Archive lets you define scheduling options for archive and purge jobs.

Define Scheduling Options

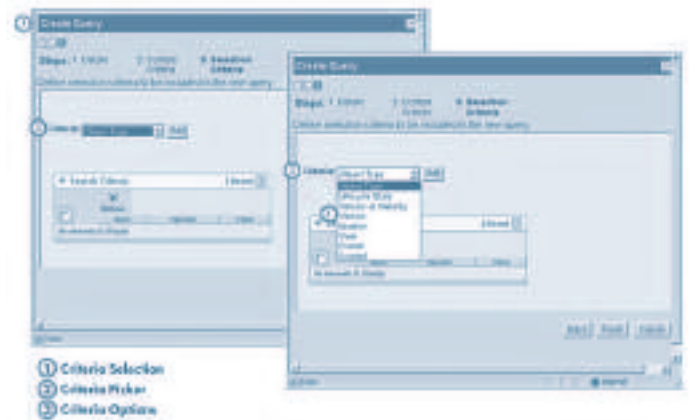
- Immediate or recurring
- Scheduled
 - Begin and End Date
 - Job Frequency: One Time, Daily, Weekly, Bi-Weekly, Monthly, Quarterly, Every n Days
- Preview or No Preview

Flexible Collection Criteria

- Define and save collection criteria regarding which objects should be purged and archived
- Use same criteria for both Archive and Purge
- Use three-step “Create Query” wizard to simplify collection criteria creation by requesting:
 1. Query Details
 2. Scope, such as which “contexts” to include (Products, Libraries, Projects)
 3. Selection Criteria
- Select data types:
 - Object type (documents, parts and CAD documents)
 - Lifecycle state
 - Version at Maturity
 - Version
 - Iteration
 - View
 - Creator
 - Created
- Review affected contexts and collection criteria in each query

Purge and Archive Job Wizard

- Quickly create new purge and archive jobs
- Specify new job details, including whether to archive the data prior to purging
- Specify archive options, including:
 - Versions and Iterations: the latest iteration of all versions, or just the latest version
 - CAD Dependents: required dependencies only, or all dependencies
- Preview purge list generated by object selection criteria prior to starting an archive and/or purge job



The Purge and Archive Wizard makes it easy to create new purge and archive jobs.

Comprehensive Capabilities

- Supports documents, parts and CAD documents objects
- Supports archiving of viewables and markups
- Minimizes purge conflicts and facilitates archive restoration
 - Prohibits removal of the last iteration of any master version
 - Remove links from a purged object to other objects
- Includes dependencies of archived objects in the archive, recursively
- Indexes archive information for searching
- Supports commercial mass-storage devices
- Accessible to site and organization administrators who have read-only permission

Platform Support

- Server Operating Systems:
 - Windows 2003 Server 32-bit and 64-bit
 - UNIX (32-bit and 64-bit): Solaris, HP-UX, AIX, Red Hat Enterprise Linux
- Browser: Internet Explorer v6.0 and 7.0, Mozilla Firefox v2.0 and higher
- Database: Oracle 10g and SQL Server 2005
- Languages: English, Chinese (Traditional), Chinese (Simplified), French, German, Italian, Japanese, Korean, Spanish

For the most up-to-date platform support information, please visit:
www.ptc.com/partners/hardware/current/support.htm

Note: The timing of any product release, including any features or functionality, is subject to change at PTC's discretion.

© 2008, Parametric Technology Corporation (PTC)—All rights reserved under copyright laws of the United States and other countries. It is furnished for informational use only, is subject to change without notice, and should not be construed as a guarantee or commitment by PTC. PTC, the PTC Logo, Windchill and all PTC product names and logos are trademarks or registered trademarks of PTC and/or its subsidiaries in the United States and in other countries.